

YEAR 2023

CORE STATION 5039

ROAD NETWORK MAJOR

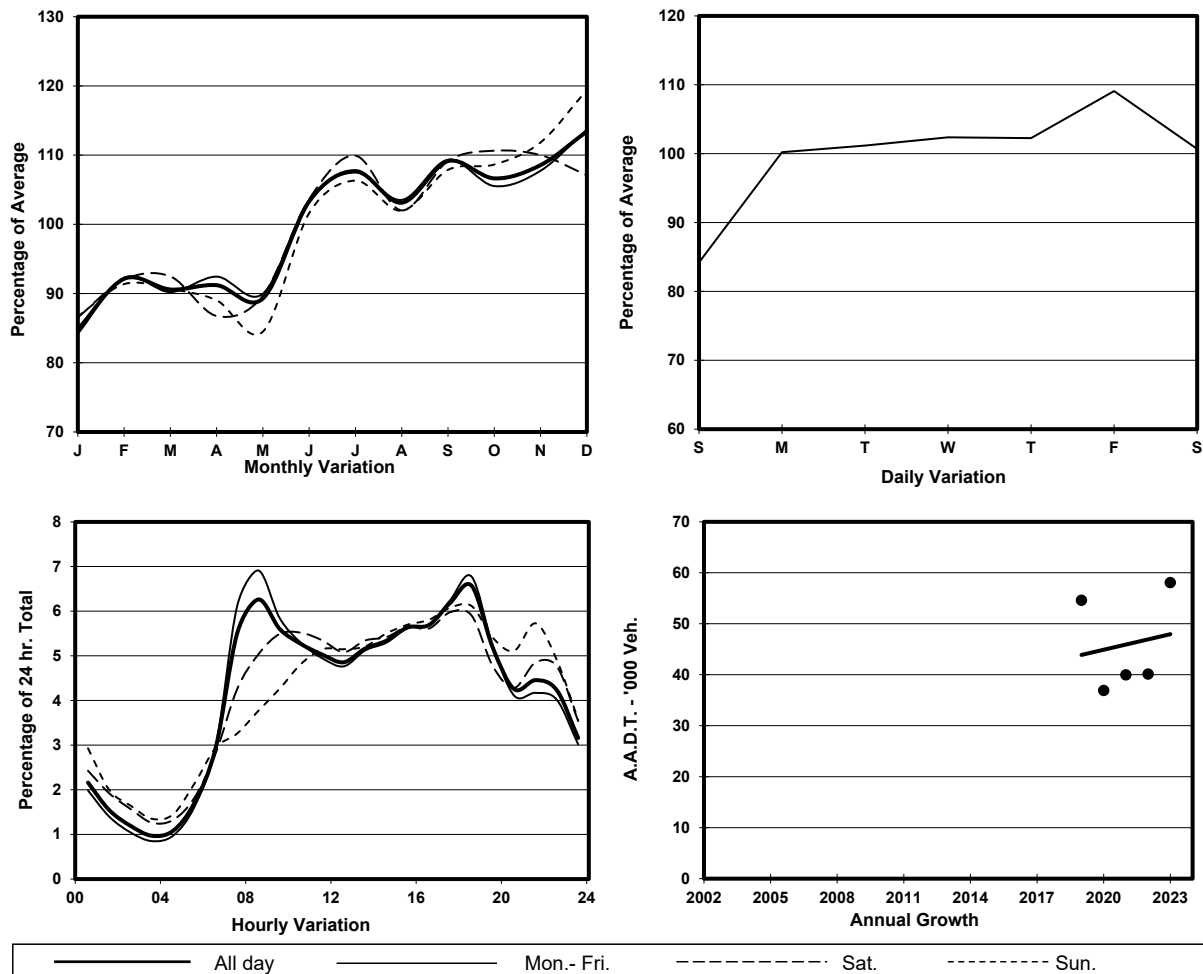
ROAD TYPE EXPRESSWAY

LINK STONECUTTERS BRIDGE (from EAST TSING YI VIADUCT to CONTAINER PORT RD S NR CONTAINER TERMINAL 8)

10.9m 11m

E bound 3 lanes W bound 3 lanes

1. TRAFFIC FLOW VARIATION AND GROWTH



2. TRAFFIC CHARACTERISTICS (BY DIRECTION)

Parameter	All - Day	Mon. - Fri.	Sat.	Sun.
EAST BOUND				
A.A.D.T.	30680	31990	30900	25920
R 12 / 24 - %	67.9	69.9	64.7	59.6
R 16 / 24 - %	85.2	86	83.7	81.7
AM Peak Hour	0800-0900	0800-0900	0900-1000	0900-1000
One-way flow at AM peak hour	2080	2410	1840	1030
T - % (AM)	-	-	-	-
PM Peak Hour	1800-1900	1800-1900	1800-1900	1800-1900
One-way flow at PM peak hour	2040	2160	1910	1720
T - % (PM)	-	-	-	-
Prop.of commercial vehicles - 16 hr.	-	-	-	-
WEST BOUND				
A.A.D.T.	27380	28450	28150	23070
R 12 / 24 - %	66.2	67.2	64.6	62.2
R 16 / 24 - %	85.3	86.3	82.9	82.3
AM Peak Hour	0800-0900	0800-0900	0900-1000	0900-1000
One-way flow at AM peak hour	1560	1760	1410	1060
T - % (AM)	-	-	-	-
PM Peak Hour	1800-1900	1800-1900	1700-1800	1700-1800
One-way flow at PM peak hour	1780	1940	1750	1360
T - % (PM)	-	-	-	-
Prop.of commercial vehicles - 16 hr.	-	-	-	-

3. OTHER INFORMATION AND COMMENT